

PERSPECTIVE VIEWS  
ARCHITECTURAL DESIGN

THE DRAWINGS AND WRITTEN MATERIAL HEREIN  
CONSTITUTE ORIGINAL WORK OF PERSPECTIVE VIEWS.  
AND AS INTELLECTUAL PROPERTY AND INSTRUMENTS  
OF SERVICE ARE SUBJECT TO COPYRIGHT AND MAY NOT  
BE REPRODUCED, DISTRIBUTED, PUBLISHED, ALTERED  
OR USED IN ANY WAY WITHOUT THE EXPRESS WRITTEN  
CONSENT OF PERSPECTIVE VIEWS.

DO NOT SCALE DRAWINGS. THESE DRAWINGS ARE TO BE  
READ IN CONJUNCTION WITH ALL RELEVANT  
ARCHITECTURAL, ENGINEERING AND CONSULTANTS  
SPECIFICATIONS AND DETAILS. CONTRACTOR  
TO VERIFY AND CONFIRM ALL DIMENSIONS AND  
ELEVATIONS ON DRAWINGS WITH SITE CONDITIONS  
AND REPORT ANY OMISSIONS OR DISCREPANCIES TO  
PERSPECTIVE VIEWS AND OBTAIN CLARIFICATION PRIOR  
TO COMMENCING WITH THE WORK.

## NEW 2.5 STOREY MULTI-UNIT DWELLING

162 ALMA STREET  
VILLAGE OF ROCKWOOD

Project No. 23-022

The undersigned has reviewed and takes  
responsibility for this design, and has the  
qualifications and meets the requirements  
set out in the Ontario Building Code to be  
a designer.

# 115278

Approver

Issue/Revision

Seal

Scale 1/4" = 1'-0"

SOUTH (FRONT)  
ELEVATION

# A301

2025-07-31 12:04:28 PM



**1**  
**A301** **SOUTH (FRONT) ELEVATION**  
SCALE: 1/4" = 1'-0"





DO NOT SCALE DRAWINGS. THESE DRAWINGS ARE TO BE  
READ IN CONJUNCTION WITH ALL RELEVANT  
ARCHITECTURAL, ENGINEERING AND CONSULTANTS  
SPECIFICATIONS AND DETAILS. CONTRACTOR  
TO VERIFY AND CONFIRM ALL DIMENSIONS, AND  
ELEVATIONS ON DRAWINGS WITH SITE CONDITIONS  
AND REPORT ANY OMISSIONS OR DISCREPANCIES TO  
PERSPECTIVE VIEWS AND OBTAIN CLARIFICATION PRIOR  
TO COMMENCING WITH THE WORK

162 ALMA STREET  
VILLAGE OF ROCKWOOD

The undersigned has reviewed and takes responsibility for this design, and has the qualifications and meets the requirements set out in the Ontario Building Code to be a designer.

Approvers

Seal

Scale  $1/4" = 1'-0"$

NORTH (REAR)

## ELEVATION

A 2022

A503

2025-07-31 12:04:33 PM



# A303



DO NOT SCALE DRAWINGS. THESE DRAWINGS ARE TO BE READ IN CONJUNCTION WITH ALL RELEVANT ARCHITECTURAL, ENGINEERING AND CONSULTANTS SPECIFICATIONS AND DETAILS. CONTRACTOR TO VERIFY AND CONFIRM ALL DIMENSIONS, AND ELEVATIONS ON DRAWINGS WITH SITE CONDITIONS AND REPORT ANY OMISSIONS OR DISCREPANCIES TO PERSPECTIVE VIEWS AND OBTAIN CLARIFICATION PRIOR TO COMMENCING WITH THE WORK.

162 ALMA STREET  
VILLAGE OF ROCKWOOD

The undersigned has reviewed and takes responsibility for this design, and has the qualifications and meets the requirements set out in the Ontario Building Code to be a designer.

Approver

Seal	
------	--

Scale  $1/4" = 1'-0"$

WEST (SIDE)

## ELEVATION

A 204

A504

2025-07-31 12:04:36 PM

1  
A304

Seal

6.1	1 (1" = 1.0")
-----	---------------

## WEST (SIDE)

## ELEVATION

A0004

A.304

\_\_\_\_\_

2025-07-31 12:04:30 PM



PERSPECTIVE VIEWS  
ARCHITECTURAL DESIGN

THE DRAWINGS AND WRITTEN MATERIAL HEREIN  
CONSTITUTE ORIGINAL WORK OF PERSPECTIVE VIEWS,  
AND AS INTELLECTUAL PROPERTY AND INSTRUMENTS  
OF SERVICE, ARE SUBJECT TO COPYRIGHT AND MAY NOT  
BE REPRODUCED, DISTRIBUTED, PUBLISHED, ALTERED  
OR USED IN ANY WAY WITHOUT THE EXPRESS WRITTEN  
CONSENT OF PERSPECTIVE VIEWS.

DO NOT SCALE DRAWINGS. THESE DRAWINGS ARE TO BE READ IN CONJUNCTION WITH ALL RELEVANT ARCHITECTURAL, ENGINEERING AND CONSULTANTS SPECIFICATIONS AND DETAILS. CONTRACTOR TO VERIFY AND CONFIRM ALL DIMENSIONS, AND ELEVATIONS ON DRAWINGS WITH SITE CONDITIONS AND REPORT ANY OMISSIONS OR DISCREPANCIES TO PERSPECTIVE VIEWS AND OBTAIN CLARIFICATION PRIOR TO COMMENCING WITH THE WORK

## NEW 2.5 STOREY MULTI-UNIT DWELLING

162 ALMA STREET  
VILLAGE OF ROCKWOOD

Project No. 23-022

The undersigned has reviewed and takes responsibility for this design, and has the qualifications and meets the requirements set out in the Ontario Building Code to be a designer.

**115278**

Approver

Issue/Revision

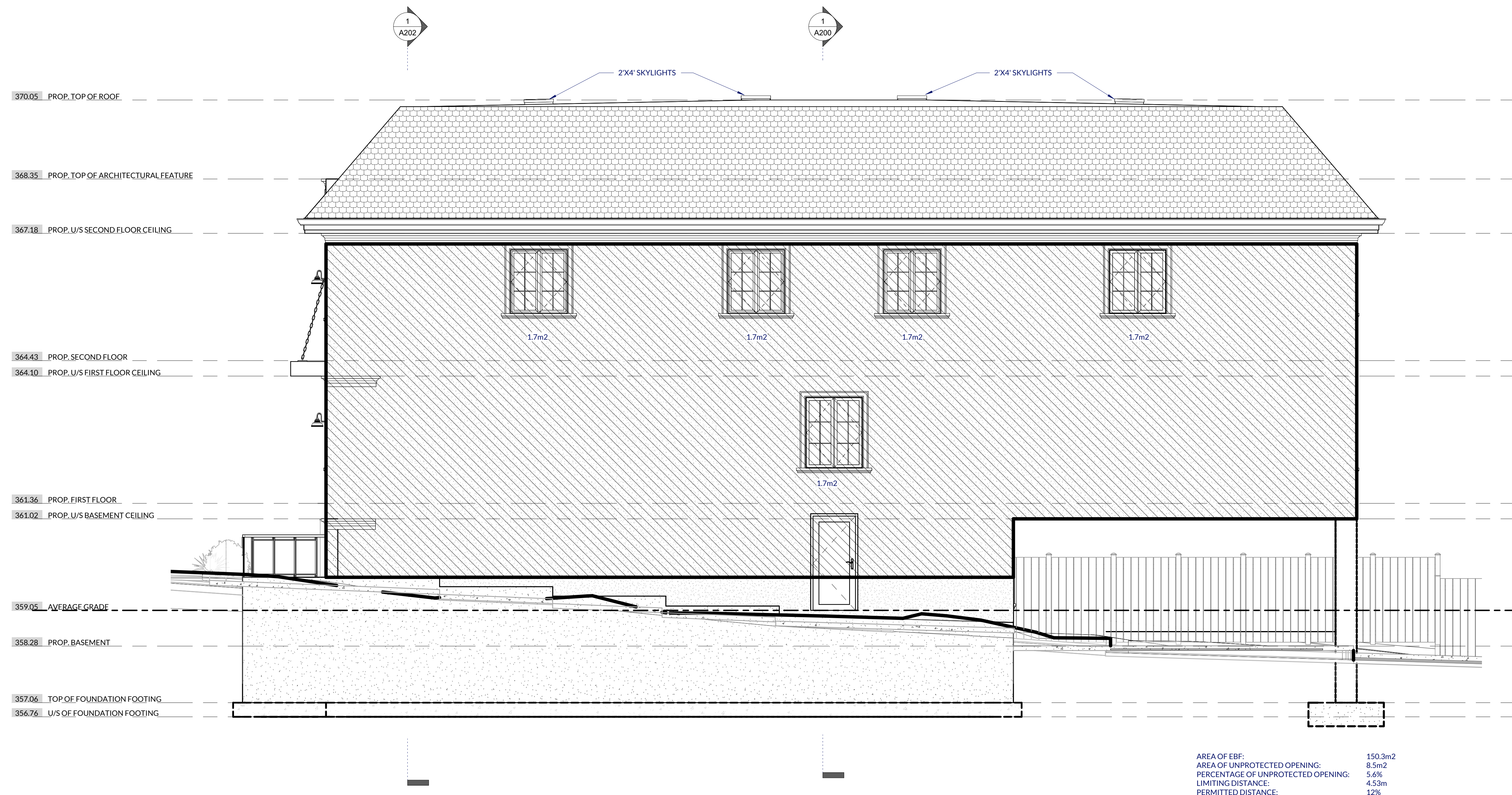
Seal

Scale  $1/4" = 1'-0"$

EAST (SIDE)  
ELEVATION  
SPATIAL CALC

# A305

2025-07-31 12:04:38 PM



1  
A305

## EAST ELEVATION SPATIAL CALC

SCALE: 1/4" = 1'-0"

NEW 2.5  
STOREY  
MULTI-UNIT  
DWELLING

162 ALMA STREET  
VILLAGE OF ROCKWOOD

Project No. 23-022

The undersigned has reviewed and takes responsibility for this design, and has the qualifications and meets the requirements set out in the Ontario Building Code to be a designer.

115278

Approver

Issue/Revision

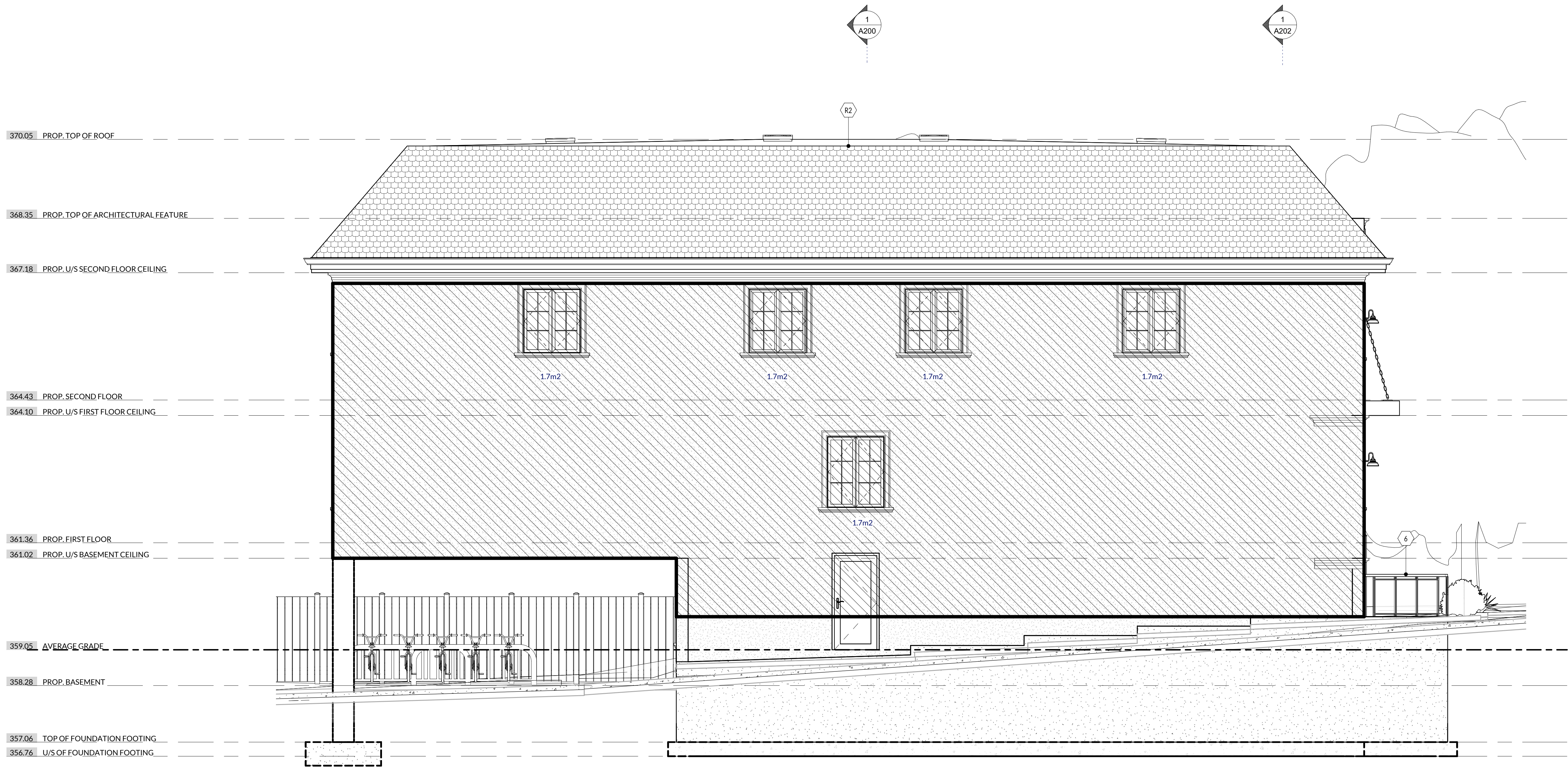
Seal

Scale 1/4" = 1'-0"

WEST (SIDE)  
ELEVATION  
SPATIAL CALC

A306

2025-07-31 12:04:43 PM



1 WEST ELEVATION SPATIAL CALC  
A306 SCALE: 1/4" = 1'-0"

AREA OF EBF: 150.3m<sup>2</sup>  
AREA OF UNPROTECTED OPENING: 8.5m<sup>2</sup>  
PERCENTAGE OF UNPROTECTED OPENING: 5.6%  
LIMITING DISTANCE: 7.45m  
PERMITTED DISTANCE: 28%